

# Technische Rider Popzaal Gigant

Laatst bijgewerkt: 26-01-2020

Voor vragen neem contact op met .....+31 (0) 55 521 63 46

**Geluid:** **Max Geluidniveau Leq =103dB(A) over 15 min.**

## **Front of House:**

- 1x Midas Pro 2
- 1x Marantz cd-player

## **PA system:**

- 7x Clair Brothers Cat 114, 2-way active line array, 14" LF, 2 x 1,4" HF (3 L, 3 R, 1 outfill)
- 4x Clair Brothers CS218 High output subwoofer 2 x 18"
- 3x Clair Brothers / Lab Gruppe modified CB-PLM10K 4 x 2100W amplifier
- 1x I/O box DL 251

## **Monitor system:**

- 1x Midas Pro 2c
- 6x Clair Brothers WedgeP-L Passive Stage Monitor
- 6x Clair Brothers WedgeP-R Passive Stage Monitor
- 3x Clair Brothers / Lab Gruppe modified CB-28:4 4 x 700W amplifier
- 1x I/O box DL 251

## **Intercom system:**

- 1x ASL Basisstation
- 2x ASL Beltpacks
- 3x ASL Headset

## **Microfoons:**

- 10x Shure SM 58
- 2x Shure B58
- 4x Shure SM 57
- 4x Shure B57
- 1x Shure B52a
- 1x Shure B91
- 9x Sennheiser e604
- 2x Sennheiser 606
- 1x Sennheiser MD 421
- 2x Sennheiser MD 422
- 2x AKG D112
- 4x AKG C430
- 2x AKG C451B
- 9x BSS DI
- 2x Shure QLXD B58 (Wireless)

## **Projector:**

- 1x Panasonic PT-DZ780 (Projector)
- 1x Panasonic ET-DLE150 (Lens)

The logo for 'gigant' is displayed in a bold, blue, sans-serif font. The letters 'g', 'i', and 'a' are lowercase, while 'n', 't', and the final 'a' are uppercase. The 'i' has a dot, and the 'a' has a dot. Below the letters 'n', 't', and the final 'a', there are five small blue diamond shapes arranged horizontally.

# Technische Rider Popzaal Gigant

## Licht:

### **Regie:**

- 1x Avolites Tiger Touch II
- 24x 2,3kW Lighttec dimmer (2x SP 12)
- 24x 2,3kW Lighttec dimmer (vaste spanning) (2x SP 12)

### **Podium:**

- 24x Fargo Classic LEDPar 64, 120W COB RGBA
- 4x Thomas Par 64 120V 1000W MFL
- 6x Thomas Par 64 220V 1000W MFL floorpar (short nose)
- 3x ACL set
- 6x Robe Viva (Mode 1) grid
- 4x Robe Viva (Mode 1) *optioneel*
- 2x Martin Atomic 3000
- 4x 2 Light Blinder, 2 x PAR 36
- 1x JEM ZR-33 (DMX)
- 1x Swefog Duramx Hazer

### **Zaal:**

- 20x Fargo stage Par 19 Pro Zoom (mode 3)
- 04x Strand PC 1200W front
- 02x Thomas Par 64 230V 1000W MFL

## DJ:

### **Mixers:**

- 2x Pioneer DJM 800
- 1x Pioneer DJM 900NXS2

### **CD spelers:**

- 2x Pioneer CDJ 1000 MK3
- 2x Pioneer CDJ 2000
- 2x Pioneer CDJ 2000 NXS2

### **Draaitafels:**

- 2x Technics SL 1200 MK 2
- 2x Technics SL 1210 MK 2

## Stroom:

### **Audio:**

- 1x 63A

### **Licht:**

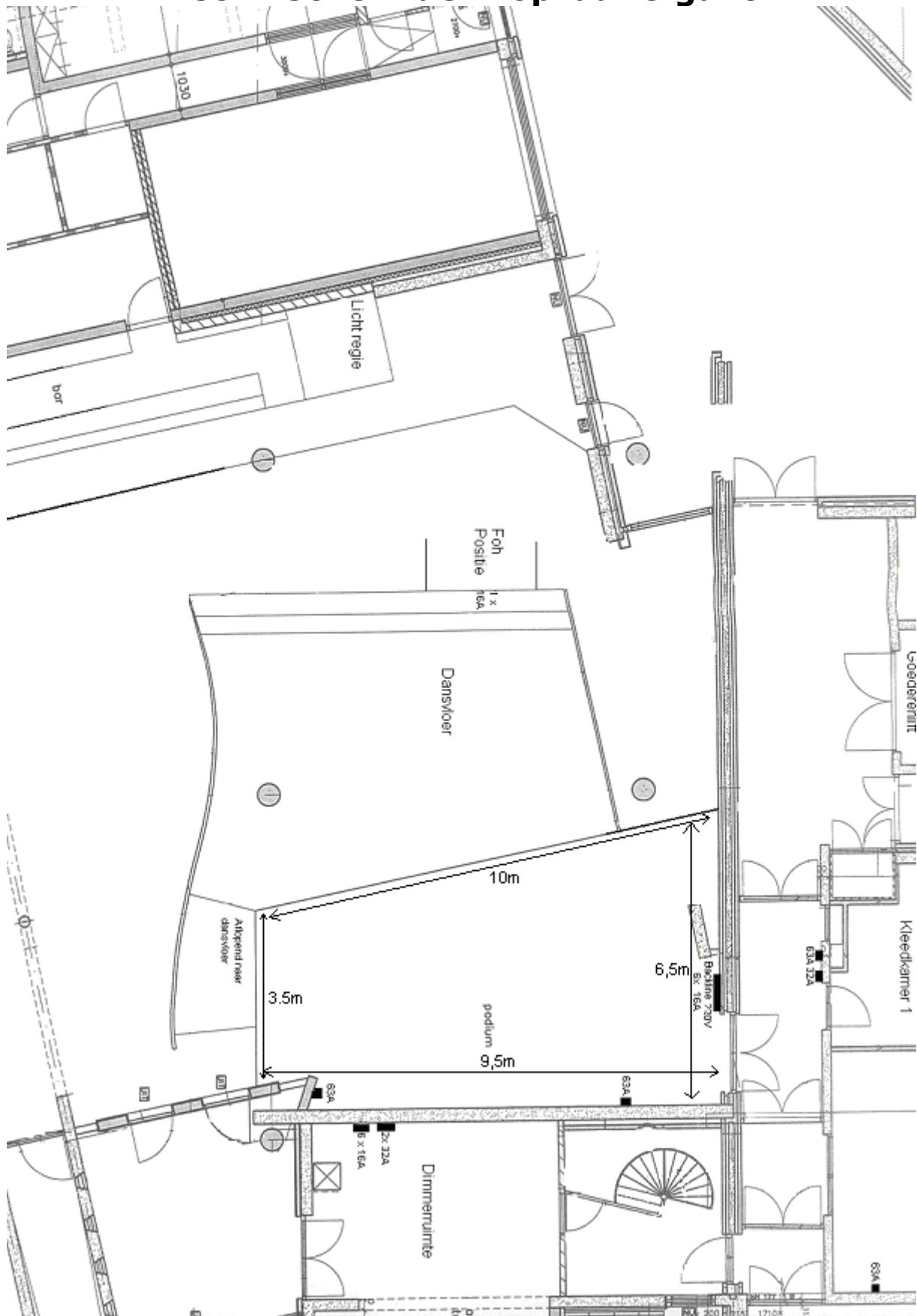
- 4x 63A
- 3x 32A

### **Podium:**

- 3x 63A (vrij)
- 1x 32A (vrij)



# Technische Rider Popzaal Gigant



**g}gant**

## **Capaciteit en Afmetingen:**

Capaciteit: 500 staplaatsen of 100 zitplaatsen  
Podiumhoogte: 0.75m  
Podiumbreedte: 10m  
Podiumdiepte: 6.0m stageright – 3.5m stageleft  
Clearance: 4m

## **Contact en Adressen:**

Technisch contact: .....  
Kantoornummer: +31 (0) 55 521 63 46  
Mobiel: +31 (0)6 .....  
[.....@gigant.nl](mailto:.....@gigant.nl)

Bezoekadres: Nieuwstraat 377  
7311 BR Apeldoorn

Artiesteningang: Museumpassage (zijstraat Roggestraat)

The logo for 'gigant' is displayed in a bold, blue, sans-serif font. The letter 'i' is replaced by a dot-matrix style 'i'. The letter 'a' is replaced by a dot-matrix style 'a'. The letter 'n' is replaced by a dot-matrix style 'n'. The letter 't' is replaced by a dot-matrix style 't'. The letters 'g', 'g', and 't' are in a standard sans-serif font.