

Technical Rider Gigant Pop Venue

Last updated: 07-10-2019

Please contact Peter Boekhorst +31 (0) 55 521 63 46

Sound: *Max Soundlevel Leq =103dB(A) over 15 min.*

Front of House:

- 1x Midas Pro 2
- 1x Marantz cd-player

PA system:

- 7x Clair Brothers Cat 114, 2-way active line array, 14" LF, 2 x 1,4" HF (3 L, 3 R, 1 outfill)
- 4x Clair Brothers CS218 High output subwoofer 2 x 18"
- 3x Clair Brothers / Lab Gruppe modified CB-PLM10K 4 x 2100W amplifier
- 1x I/O box DL 251

Monitor system:

- 1x Midas Pro 2c
- 6x Clair Brothers WedgeP-L Passive Stage Monitor
- 6x Clair Brothers WedgeP-R Passive Stage Monitor
- 3x Clair Brothers / Lab Gruppe modified CB-28:4 4 x 700W amplifier
- 1x I/O box DL 251

Intercom system:

- 1x ASL Masterstation
- 2x ASL Beltpacks
- 3x ASL Headset

Mic's:

- 10x Shure SM 58
- 2x Shure B58
- 4x Shure SM 57
- 4x Shure B57
- 1x Shure B52a
- 1x Shure B91
- 9x Sennheiser e604
- 2x Sennheiser 606
- 1x Sennheiser MD 421
- 2x Sennheiser MD 422
- 2x AKG D112
- 4x AKG C430
- 2x AKG C451B
- 9x BSS DI
- 2x Shure QLXD B58 (Wireless)

Projector:

- 1x Panasonic PT-DZ780 (Projector)
- 1x Panasonic ET-DLE150 (Lens)



Technical Rider Gigant Pop Venue

Light:

Control:

- 1x Avolites Tiger Touch II
- 24x 2,3kW Lightec dimmer (dim voltage) (2x SP 12)
- 24x 2,3kW Lightec dimmer (mains voltage) (2x SP 12)

Stage:

- 24x Fargo Classic LEDPar 64, 120W COB RGBA
- 4x Thomas Par 64 120V 1000W MFL
- 6x Thomas Par 64 220V 1000W MFL floorpar (short nose)
- 3x ACL set
- 6x Robe Viva (Mode 1) grid
- 4x Robe Viva (Mode 1) *optioneel*
- 2x Martin Atomic 3000
- 4x 2 Light Blinder, 2 x PAR 36
- 1x JEM ZR-33 (DMX)
- 1x Swefog Duramx Hazer

Audience area :

- 20x Fargo stage Par 19 Pro Zoom (mode 3)
- 04x Strand PC 1200W front
- 02x Thomas Par 64 230V 1000W MFL

DJ:

Mixers:

- 2x Pioneer DJM 800
- 1x Pioneer DJM 900NXS2

CD players:

- 2x Pioneer CDJ 1000 MK3
- 2x Pioneer CDJ 2000
- 2x Pioneer CDJ 2000 NXS2

Turntables:

- 2x Technics SL 1200 MK 2
- 2x Technics SL 1210 MK 2

Power:

Audio:

- 1x 63A

Light:

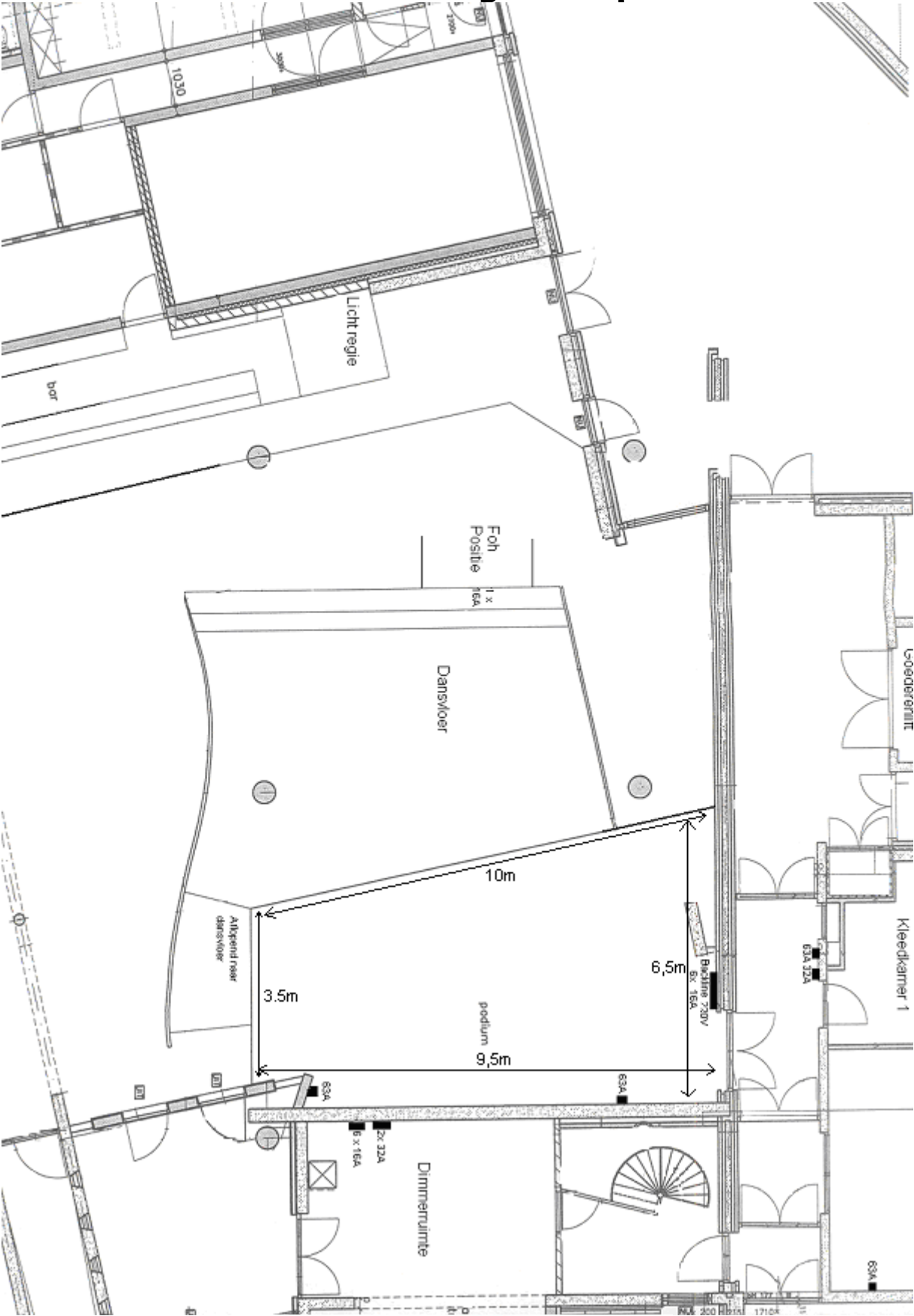
- 4x 63A
- 3x 32A

Stage:

- 3x 63A (available)
- 1x 32A (available)



Technical Rider Gigant Pop Venue



g}gant

Capacity and Dimensions

Capacity: 500 standing or 100 seated
Stageheight: 0.75m
Stagewidth: 10m
Stagedepth: 6.0m stageright – 3.5m stageleft
Clearence: 4m

Contact and Adresses:

Technical contact: Peter Boekhorst
Officephone: +31 (0) 55 521 63 46
Cellphone: +31 (0)6 10 24 47 70
p.boekhorst@gigant.nl

Visitingaddress: Nieuwstraat 377
7311 BR Apeldoorn

Artistentrance: Museumpassage (via Roggestraat)

The logo for Gigant, featuring the word "gigant" in a bold, blue, sans-serif font. The letter "i" is replaced by a dot matrix pattern. The letters "g", "a", and "n" have a stylized, blocky appearance with a small gap between the "g" and "i".