

Technical Rider Gigant Pop Venue

Last updated: 26-02-2018

Please contact Peter Boekhorst +31 (0) 55 521 63 46

Sound: *Max Soundlevel Leq =103dB(A) over 15 min.*

Front of House:

- 1x Midas Pro 2
- 1x Marantz cd-player

PA system:

- 7x Clair Brothers Cat 114, 2-way active line array, 14" LF, 2 x 1,4" HF (3 L, 3 R, 1 outfill)
- 4x Clair Brothers CS218 High output subwoofer 2 x 18"
- 3x Clair Brothers / Lab Gruppe modified CB-PLM10K 4 x 2100W amplifier
- 1x I/O box DL 251

Monitor system:

- 1x Midas Pro 2c
- 6x Clair Brothers WedgeP-L Passive Stage Monitor
- 6x Clair Brothers WedgeP-R Passive Stage Monitor
- 3x Clair Brothers / Lab Gruppe modified CB-28:4 4 x 700W amplifier
- 1x I/O box DL 251

Intercom system:

- 1x ASL Masterstation
- 2x ASL Beltpacks
- 3x ASL Headset

Mic's:

- 10x Shure SM 58
- 2x Shure B58
- 4x Shure SM 57
- 4x Shure B57
- 1x Shure B52a
- 1x Shure B91
- 9x Sennheiser e604
- 2x Sennheiser 606
- 1x Sennheiser MD 421
- 2x Sennheiser MD 422
- 1x Sennheiser MD 441
- 2x AKG D112
- 4x AKG C430
- 2x AKG C451B
- 9x BSS DI
- 2x Shure QLXD B58 (Wireless)

Projector:

- 1x Panasonic PT-DZ780 (Projector)
- 1x Panasonic ET-DLE150 (Lens)



Technical Rider Gigant Pop Venue

Light:

Control:

1x Avolites Tiger Touch II
48x 2,3kW Lightec dimmer (4x SP 12)

Stage:

28x Thomas Par 64 230V 1000W MFL
08x Thomas Par 64 120V 1000W MFL
6x Thomas Par 64 220V 1000W MFL floorpar (short nose)
3x ACL set
6x Robe Viva (Mode 1) grid
4x Robe Viva (Mode 1) floor
1x JEM ZR-33 (DMX)
1x Haze base (DMX hazer)
2x Martin Atomic 3000

Audience area :

20x Fargo stage Par 19 Pro Zoom (mode 3)
04x Strand PC 1200W front
02x Thomas Par 64 230V 1000W MFL

DJ:

Mixers:

2x Pioneer DJM 800
1x Pioneer DJM 900NXS2

CD players:

2x Pioneer CDJ 1000 MK3
2x Pioneer CDJ 2000
2x Pioneer CDJ 2000 NXS2

Turntables:

2x Technics SL 1200 MK 2
2x Technics SL 1210 MK 2

Power:

Audio:

1x 63A

Light:

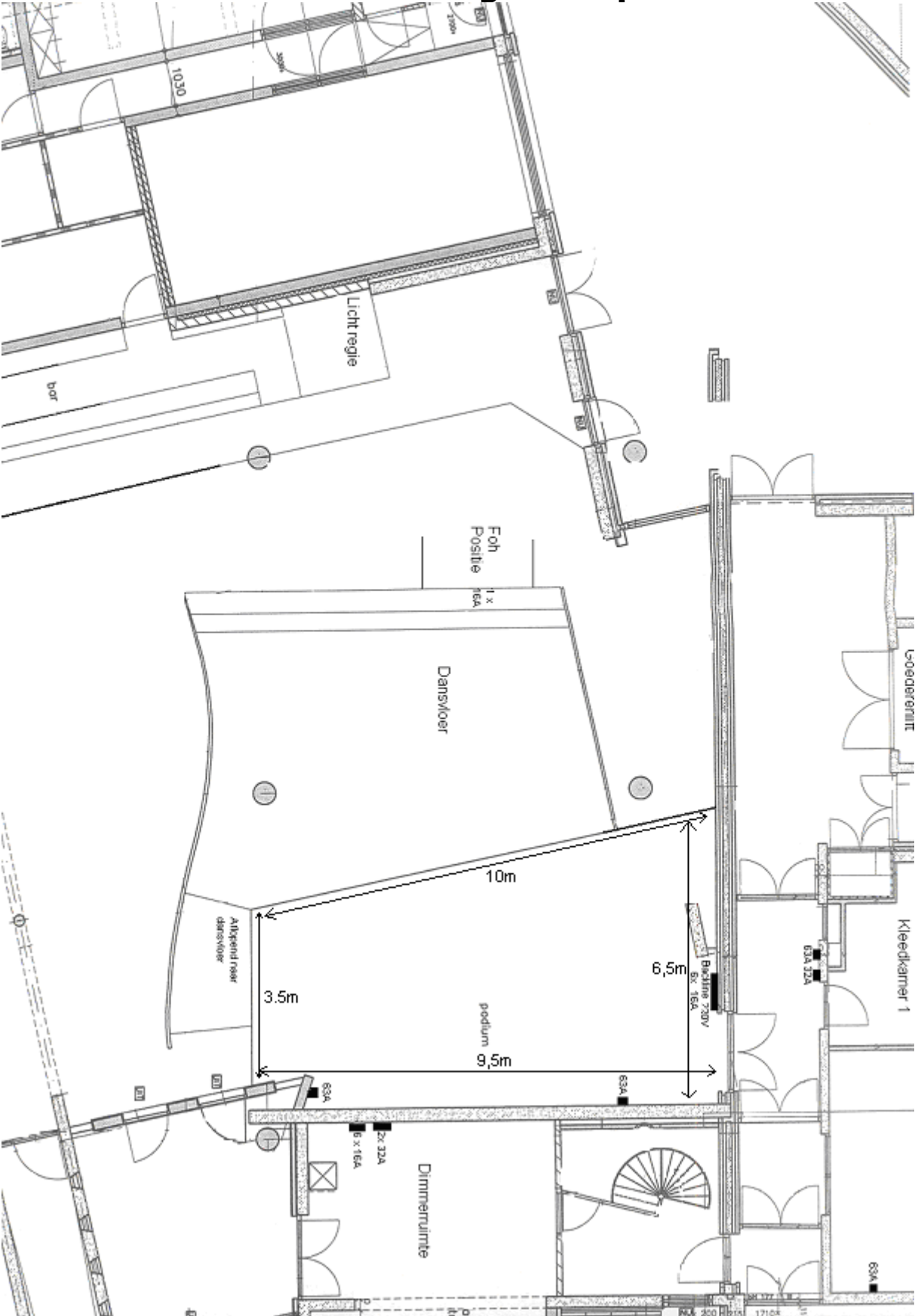
4x 63A
3x 32A

Stage:

3x 63A (available)
1x 32A (available)



Technical Rider Gigant Pop Venue



g}gant

Capacity and Dimensions

Capacity: 500 standing or 200 seated
Stageheight: 0.80m
Stagewidth: 10m
Stagedepth: 6.5m stageleft – 3.5m stageright
Clearance: 4m

Contact and Adresses:

Technical contact: Peter Boekhorst
Officephone: +31 (0) 55 521 63 46
Cellphone: +31 (0)6 10 24 47 70
p.boekhorst@gigant.nl

Visitingaddress: Nieuwstraat 377
7311 BR Apeldoorn

Artistentrance: Museumpassage (via Roggestraat)

The logo for Gigant, featuring the word "gigant" in a bold, blue, sans-serif font. The letter "i" is replaced by a stylized dot-matrix character. Below the letters "a", "n", and "t" are five small blue diamond shapes.